

I_SITE

How would you like to be a hero? As a building owner or operator, you can equip emergency personnel with more than hoses and axes. The tragic events of 9/11 have heightened public awareness about how critical it is for emergency personnel to know what to expect before they enter a building.

Emergency responders tell us, “the most important information you can give me is how to get in, get around, and get out of the building.”

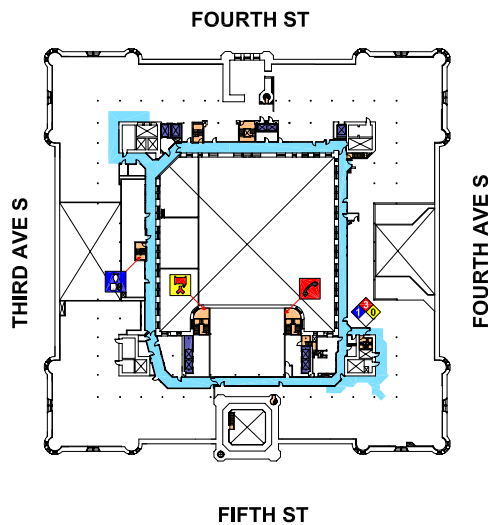
Many cities require that building owners submit updated plans as part of acquiring a certificate of occupancy, but those plans are often next to useless to emergency responders, because they are too complex for the average person to understand quickly, or they are stored away in someone’s file room, or as one fire chief told us, “more likely in somebody’s trunk.”

i-SITE interacts with a city’s Geographic Information System (GIS) and Computer-Aided-Dispatch systems to provide first responders with crucial digital information about a building’s occupancy, contact information and construction issues, as well as specially designed floor plans indicating a simplified, easy to understand interior layout and critical locations of:

- Primary Circulation & Exits
- Stairs, Elevators & Bathrooms
- Hose Connections & Standpipes
- Structural, Mechanical, Electrical & Fire Protection Systems
- Utilities Shutoffs
- Hazardous Materials
- Emergency Phones
- Designated Areas of Refuge

The information and digital plans are called up by the GIS or CAD system en route to the emergency, allowing first responders to orient themselves and begin to assess the site conditions before they even arrive.

“At the very least, this technology will save seconds, and in this business, seconds save lives.”
-Minneapolis Fire Chief-



The screenshot displays the i-SITE mobile application interface. At the top, it shows the current floor level as 'FLOORS' with a grid of numbers (6, 1, 5) and a minus sign (-1). Below this, it indicates '8 Stories Above Grade' and '3 Stories Below Grade'. A legend section lists various building features with corresponding symbols: Entry/Exit (red diamond), Alarm Panel (red square), Primary Circulation (blue square), Stair (orange square), Elevator (purple square), Secured Area (red square), FDC (green square), Standpipe (yellow square), Splitter (blue square), Fire Pump Room (red square), Hazardous Material (red diamond with 'X'), Emergency Phone (red square), Gas Shut-off (blue triangle), Water Shut-off (blue triangle), Electric Shut-off (blue triangle), HVAC Shut-off (blue triangle), Telecom Shut-off (blue triangle), and Key Box (black circle). At the bottom, a location map shows the building's position on a street grid, with the address 'XYZ Building Fifth Floor, 1200 Main St, Minneapolis, MN 55412-1000' and a scale bar.

I-SITE PLAN